

Основи проектування САПР

Модуль 1: Введення до Ansys

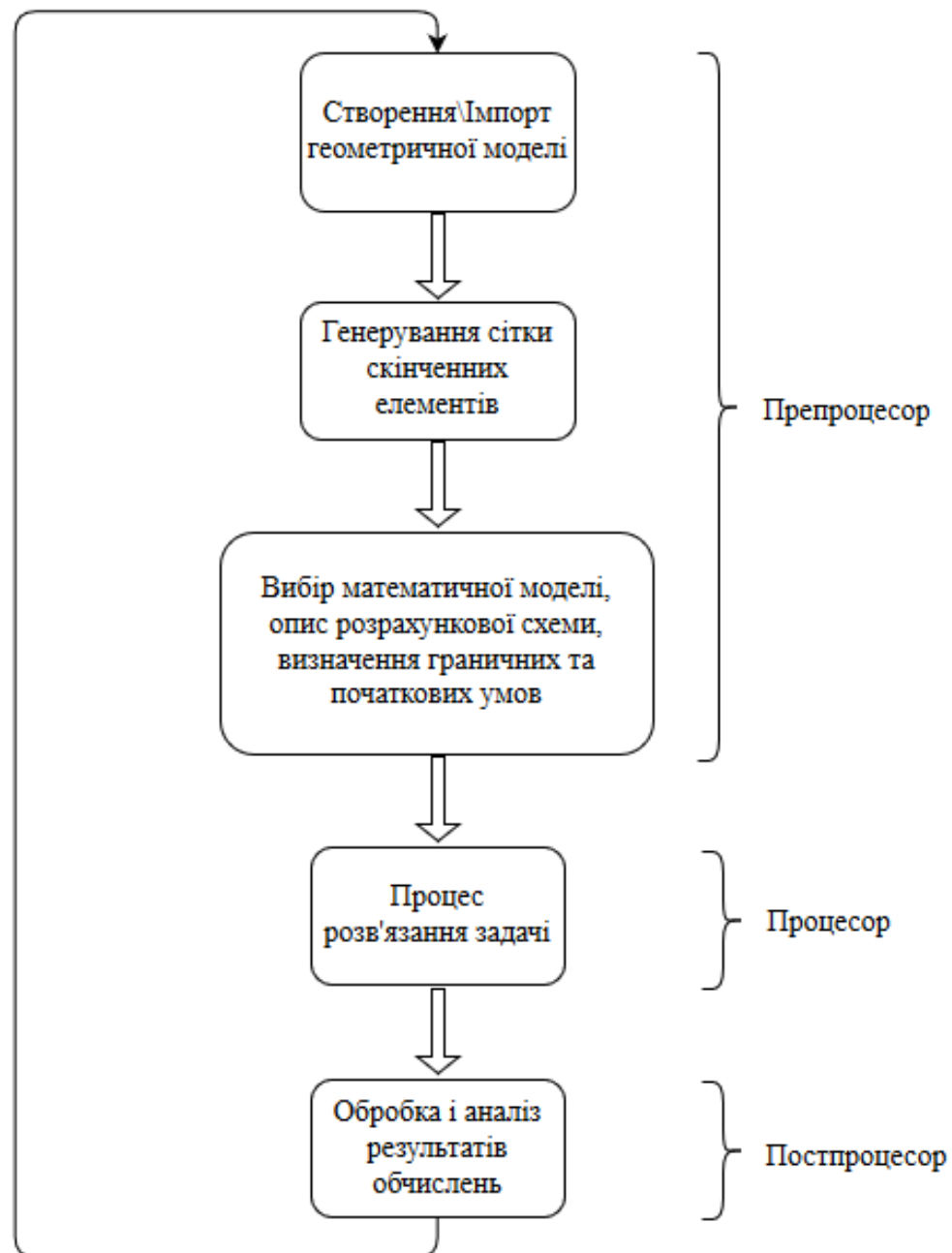
Лекція 3. Побудова сіток

Кудін Олексій Володимирович
avk256@gmail.com



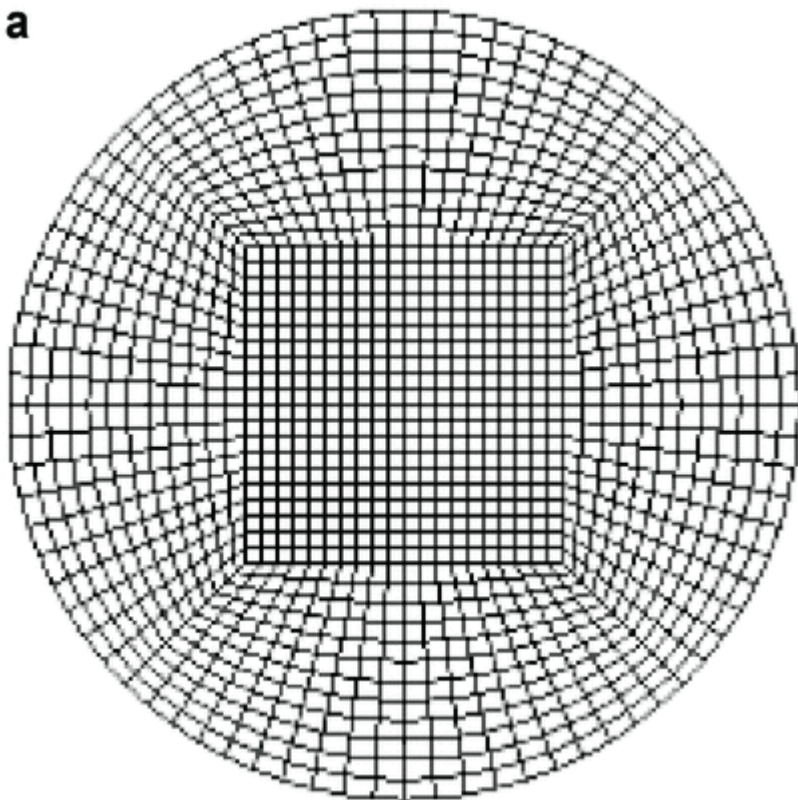
План

1. Основні властивості сіток.
2. Засоби побудови сіток у Ansys.

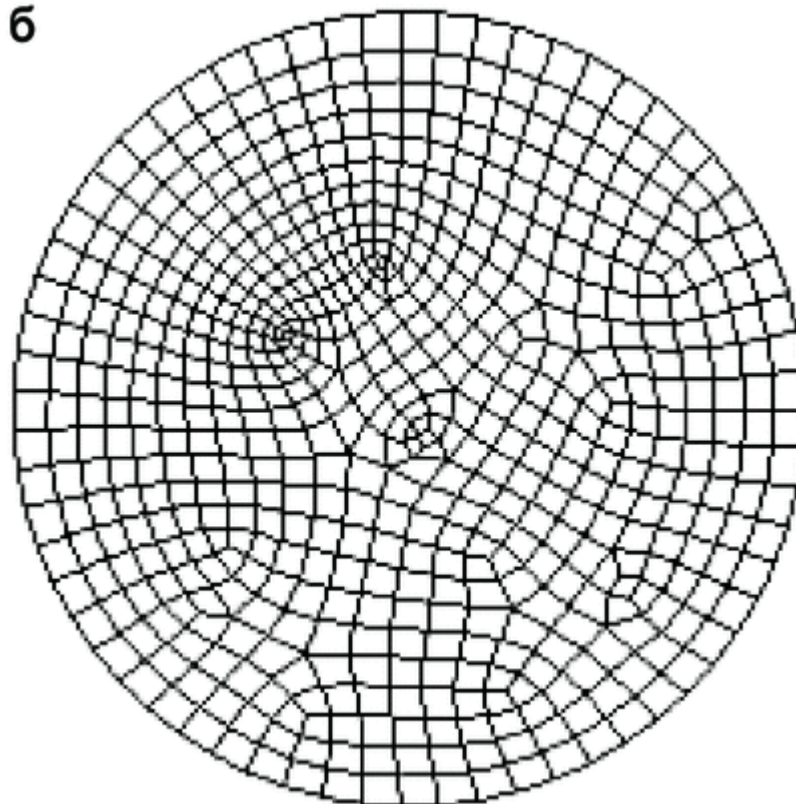


Структура сітки

а

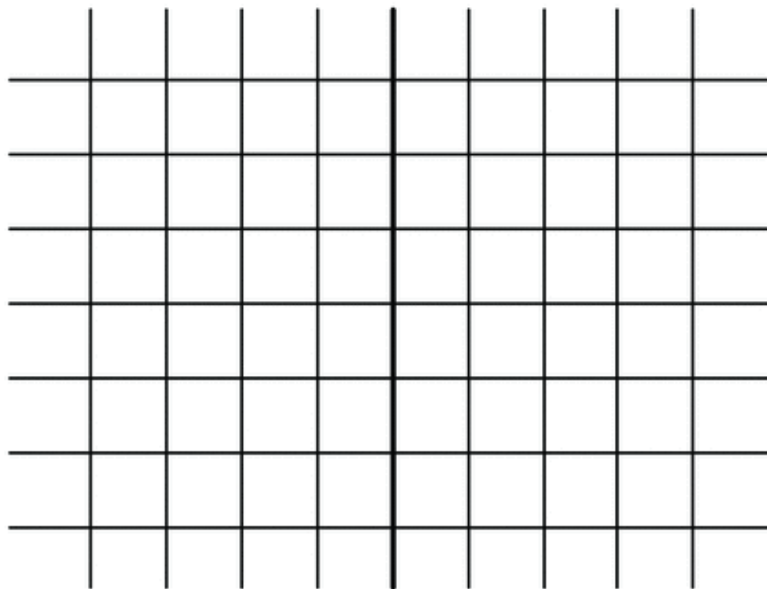


б

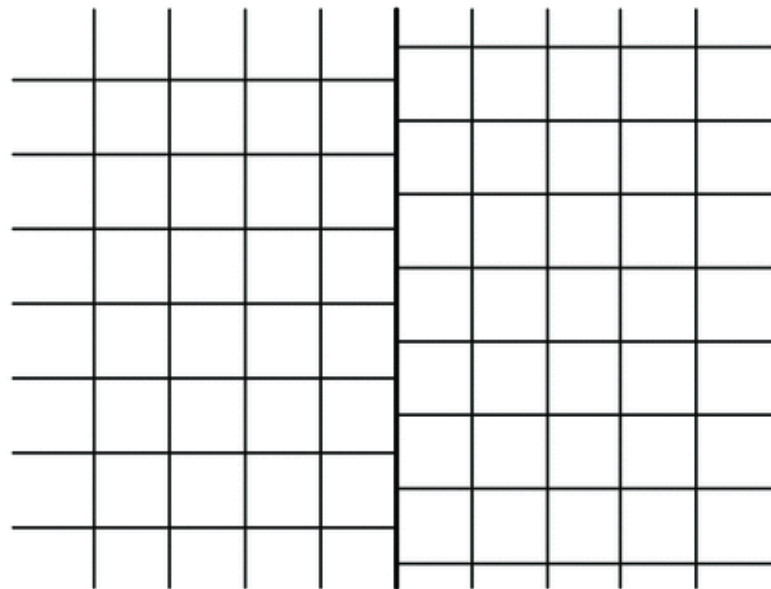


Конформність сітки

а

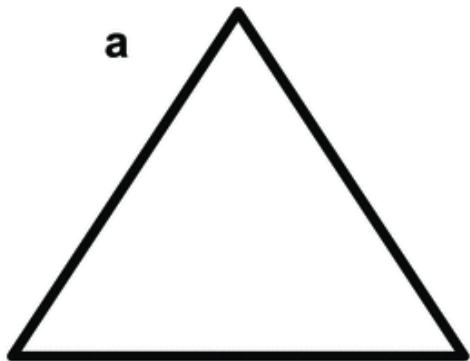


б



Елемент сітки

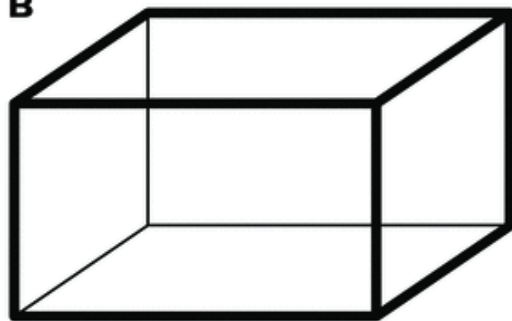
а



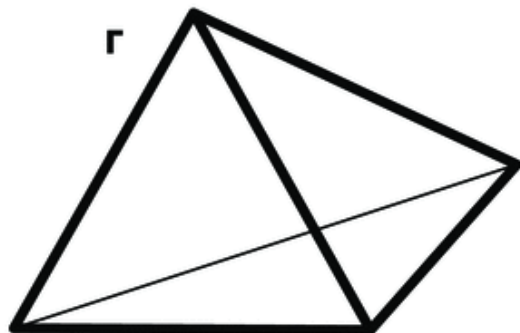
б



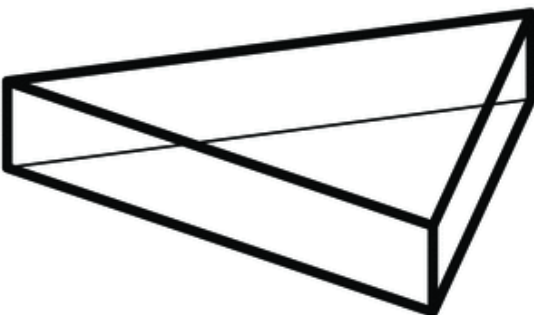
в



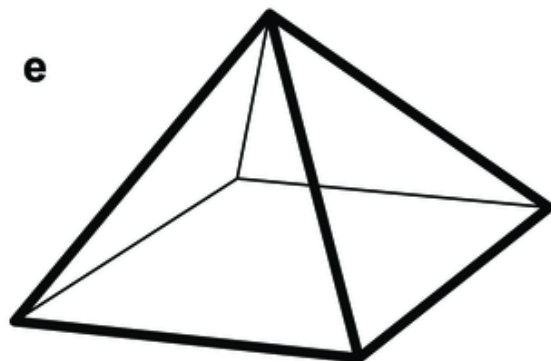
г



д

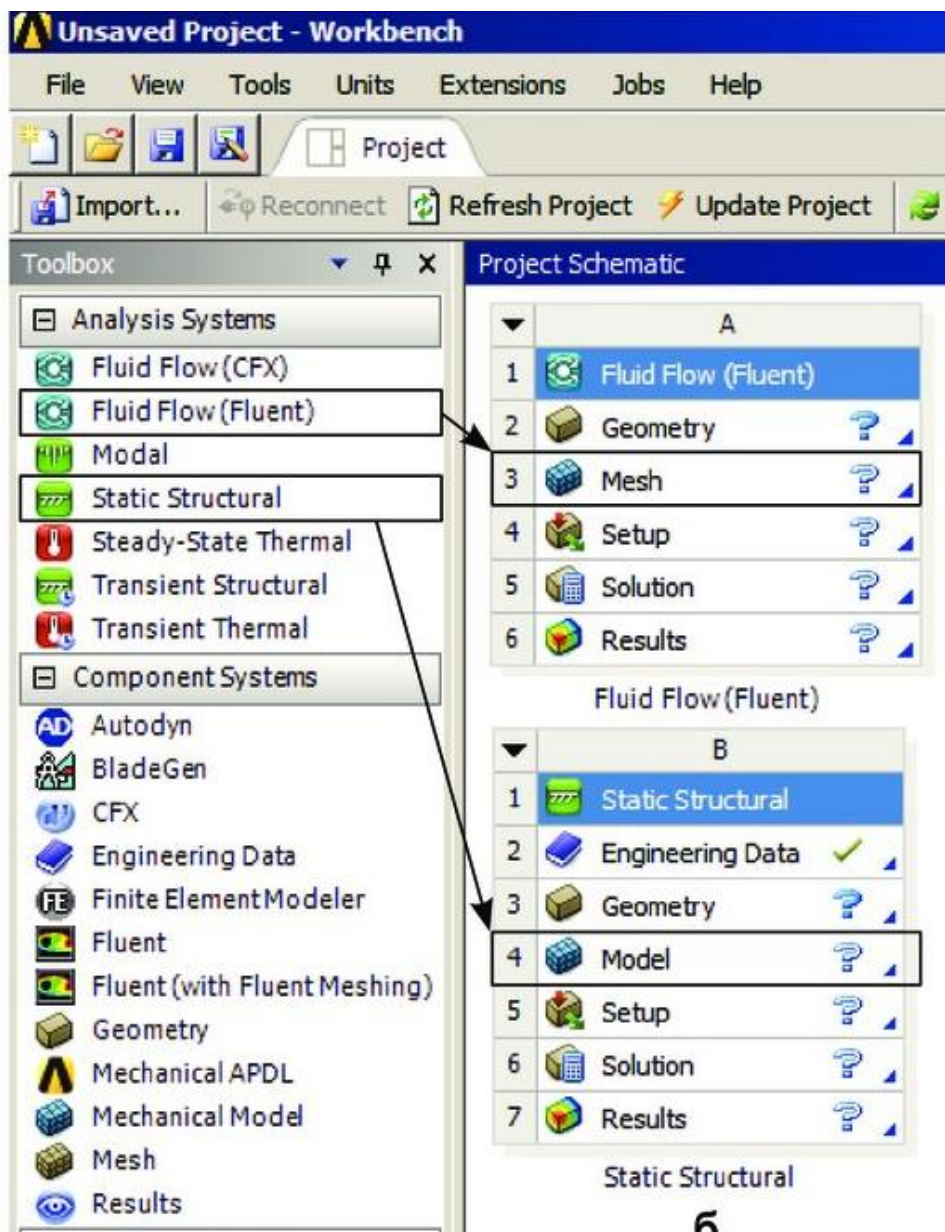
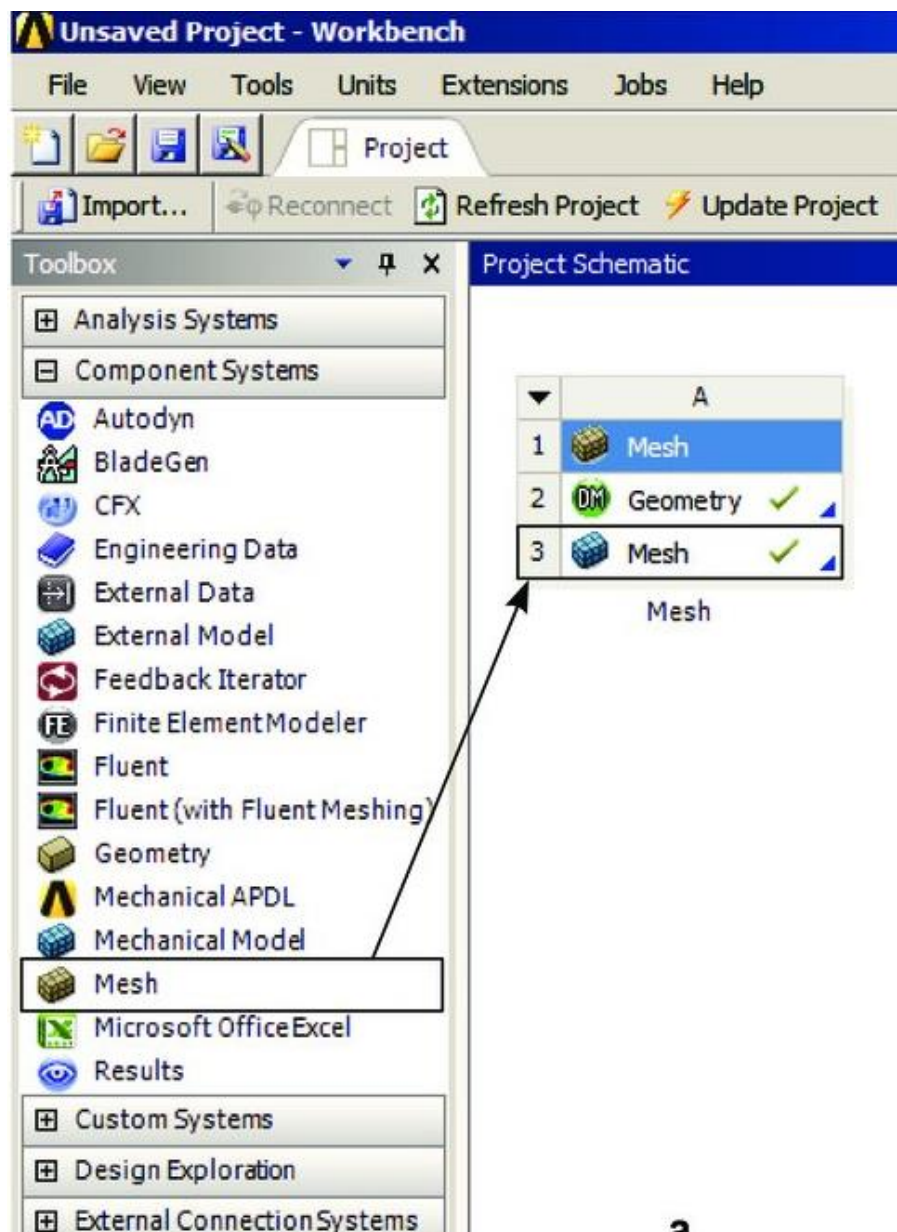


е



Засоби Ansys Workbench для побудови сіток:

- **Ansys Meshing**
- Ansys TurboGrid
- Ansys ICEM CFD



Ansys meshing

A : Mesh - Meshing [ANSYS Academic Teaching Advanced]

File Edit View Units Tools Help | Generate Mesh | Worksheet

Show Vertices Close Vertices 1,1e-002 (Auto Scale) Wireframe Show Mesh Random Colors Annotation Preferences

Edge Coloring | Selection Visibility Suppression Unit Conversion Acceleration 0 m/s² = 0 m/s²

Mesh Update Mesh Mesh Control Mesh Edit Metric Graph Probe

ACT Development

Toolbars

Outline

- Project
 - Model (A3)
 - Geometry
 - Coordinate Systems
 - Mesh

Graphic Window

Details Window

Selection Information

Message/Mesh Metrics

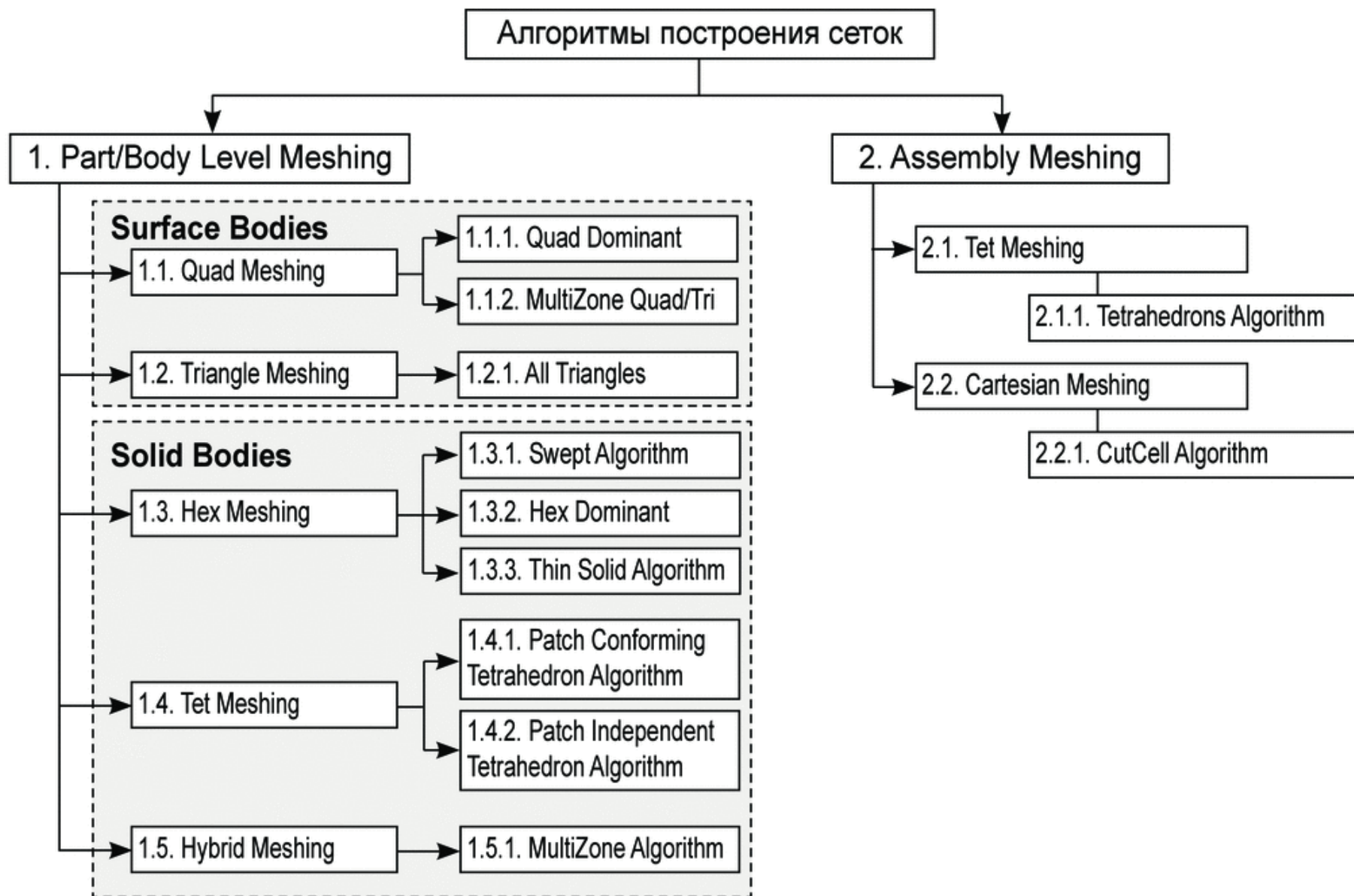
Manage View

ANSYS R17.0 Academic

0,000 1,750 3,500 5,250 7,000 (m)

Hex20 Wed15

Entity	Length (m)	Centroid X(m)	Centroid Y(m)
1 Edge, Summary	12,566	7,0769e-017	-2,3774e-01
Edge 1	12,566	7,0769e-017	-2,3774e-01



2D meshing. Quadrilateral Dominant

